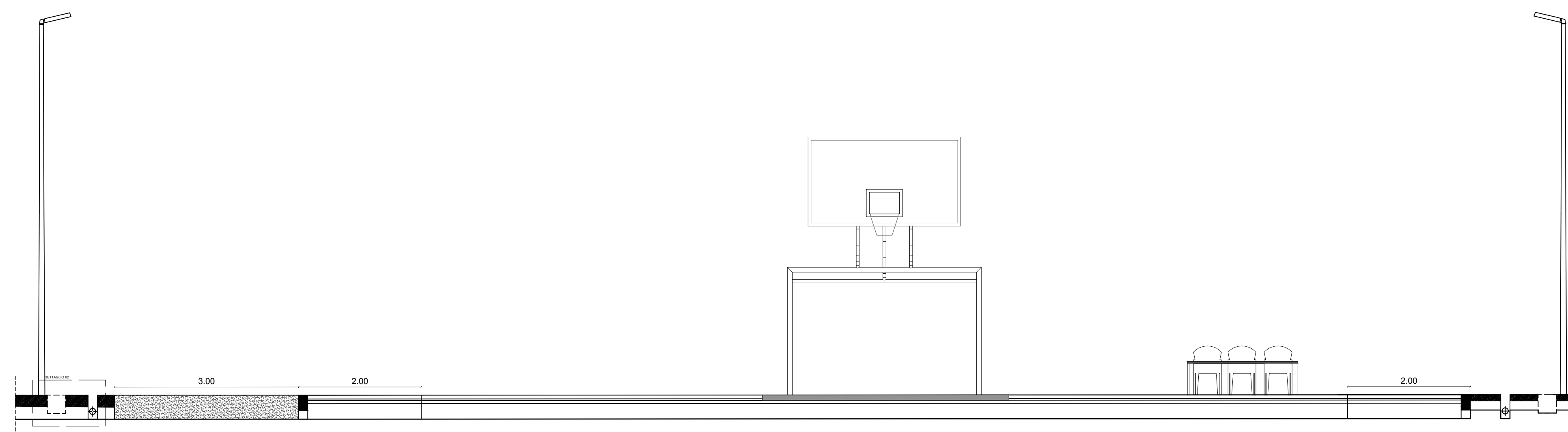
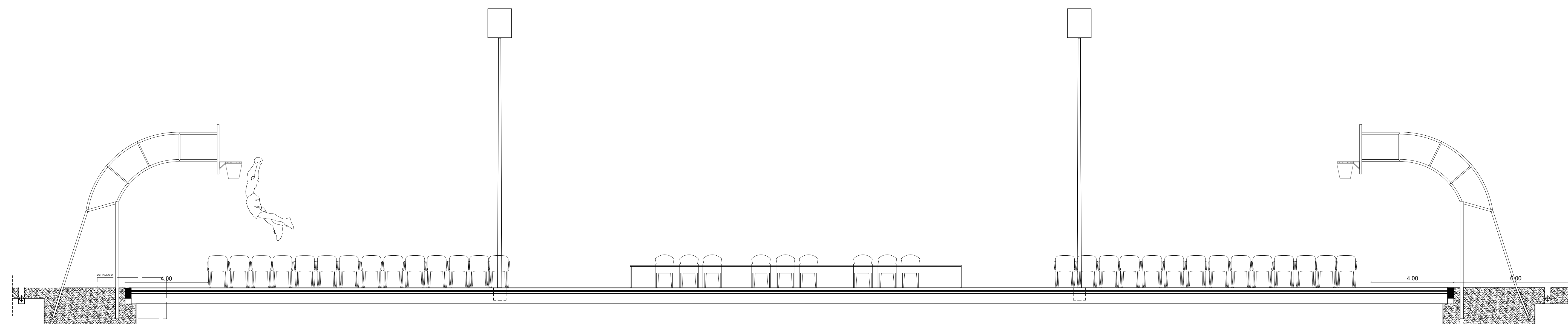
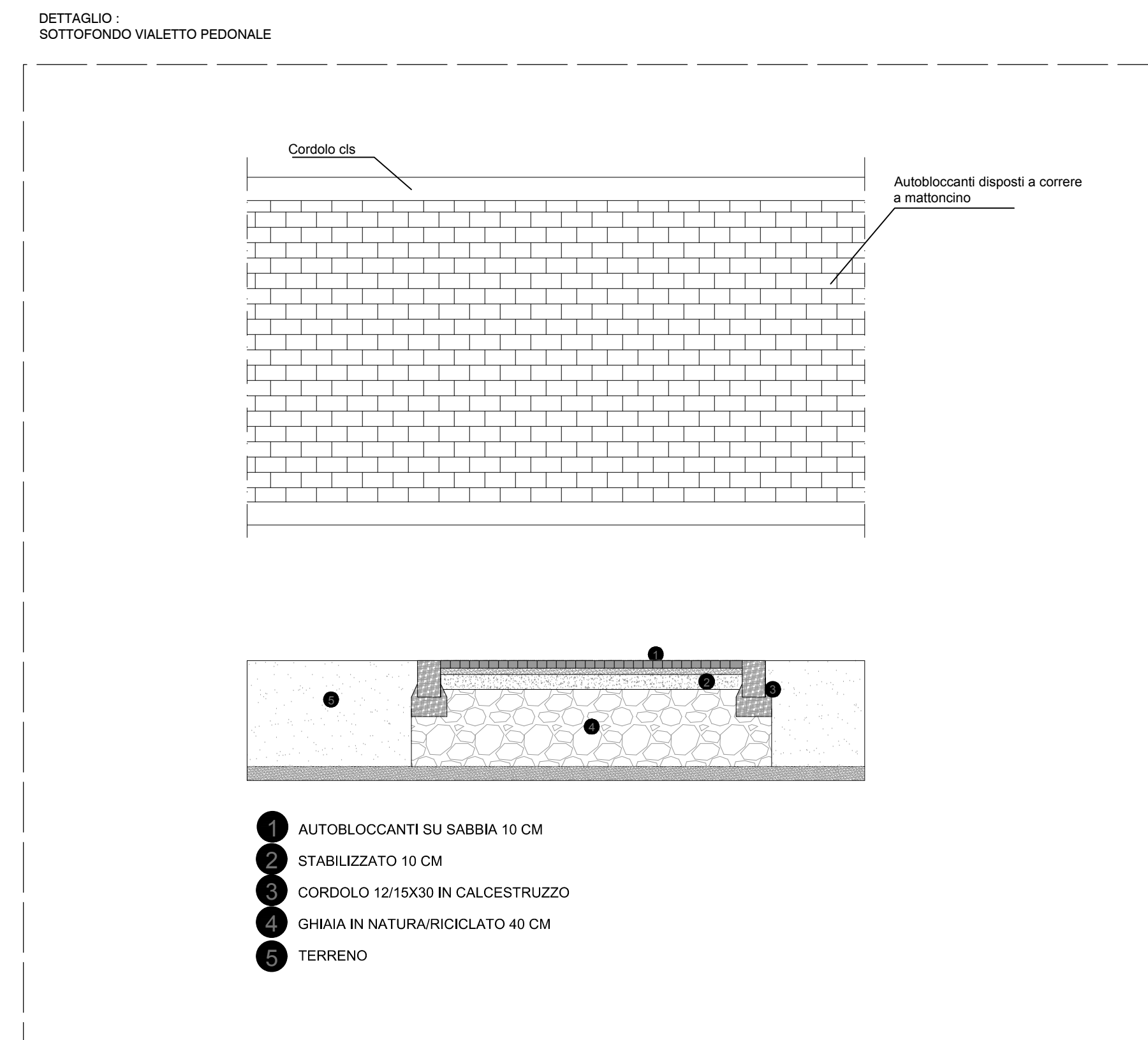
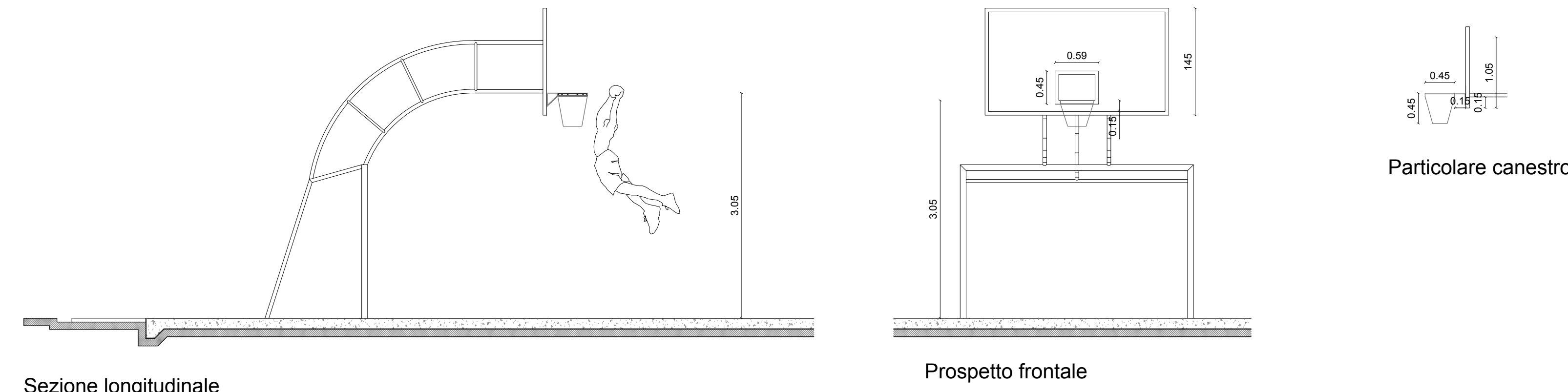
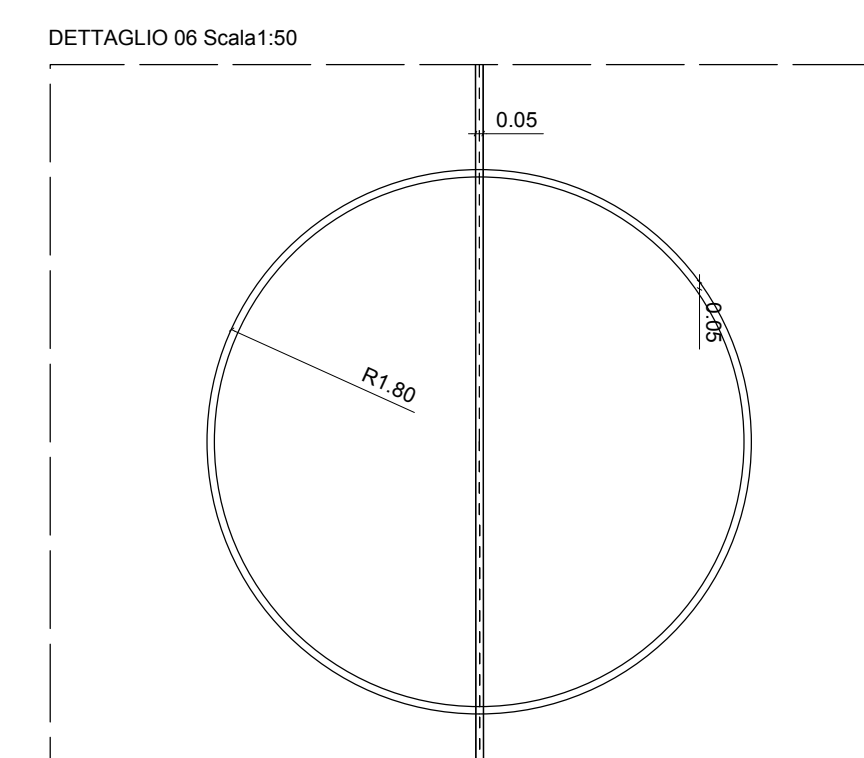
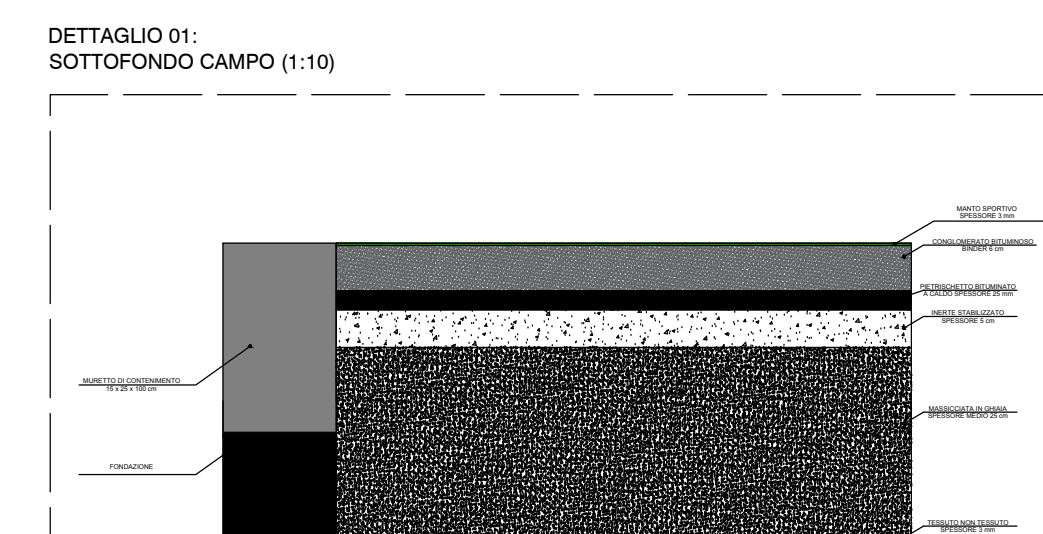
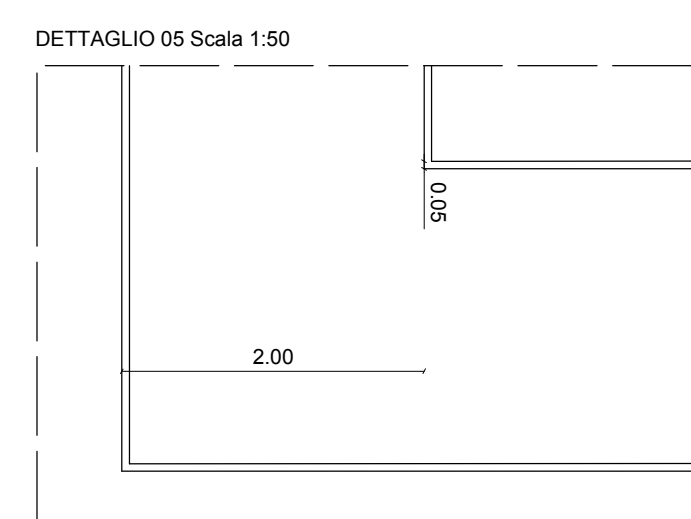
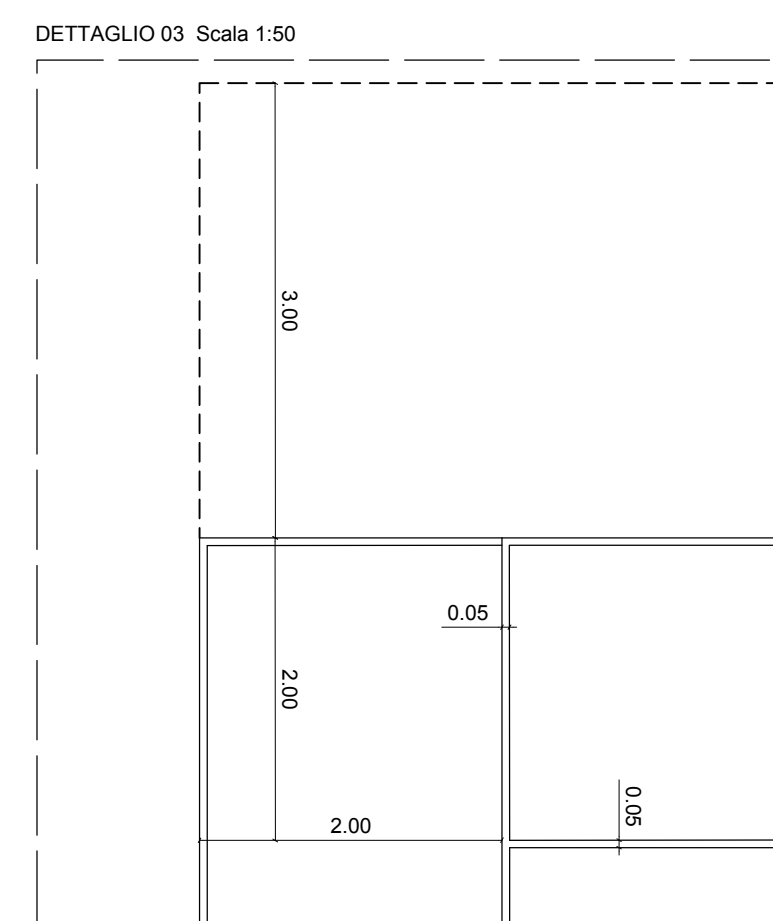
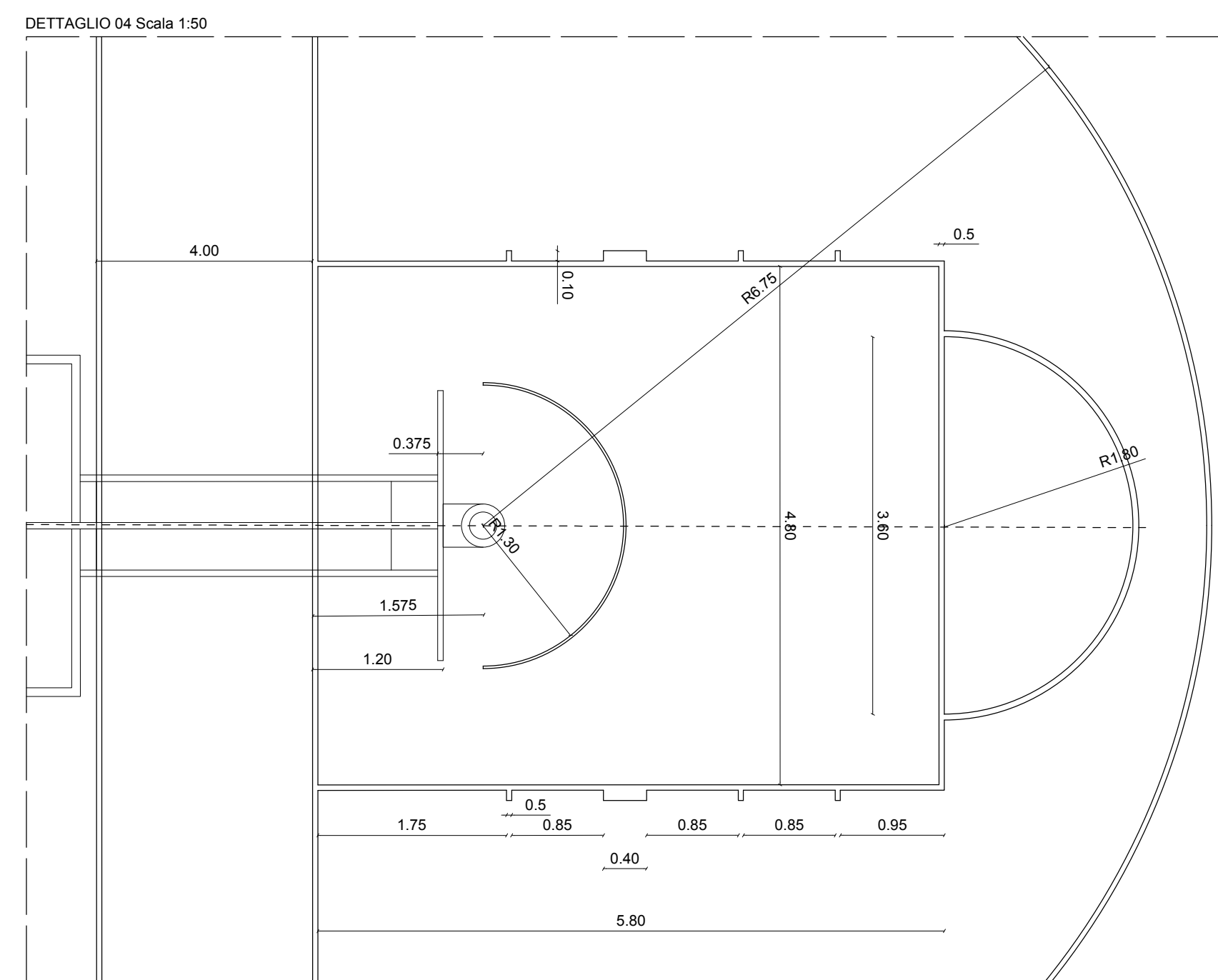
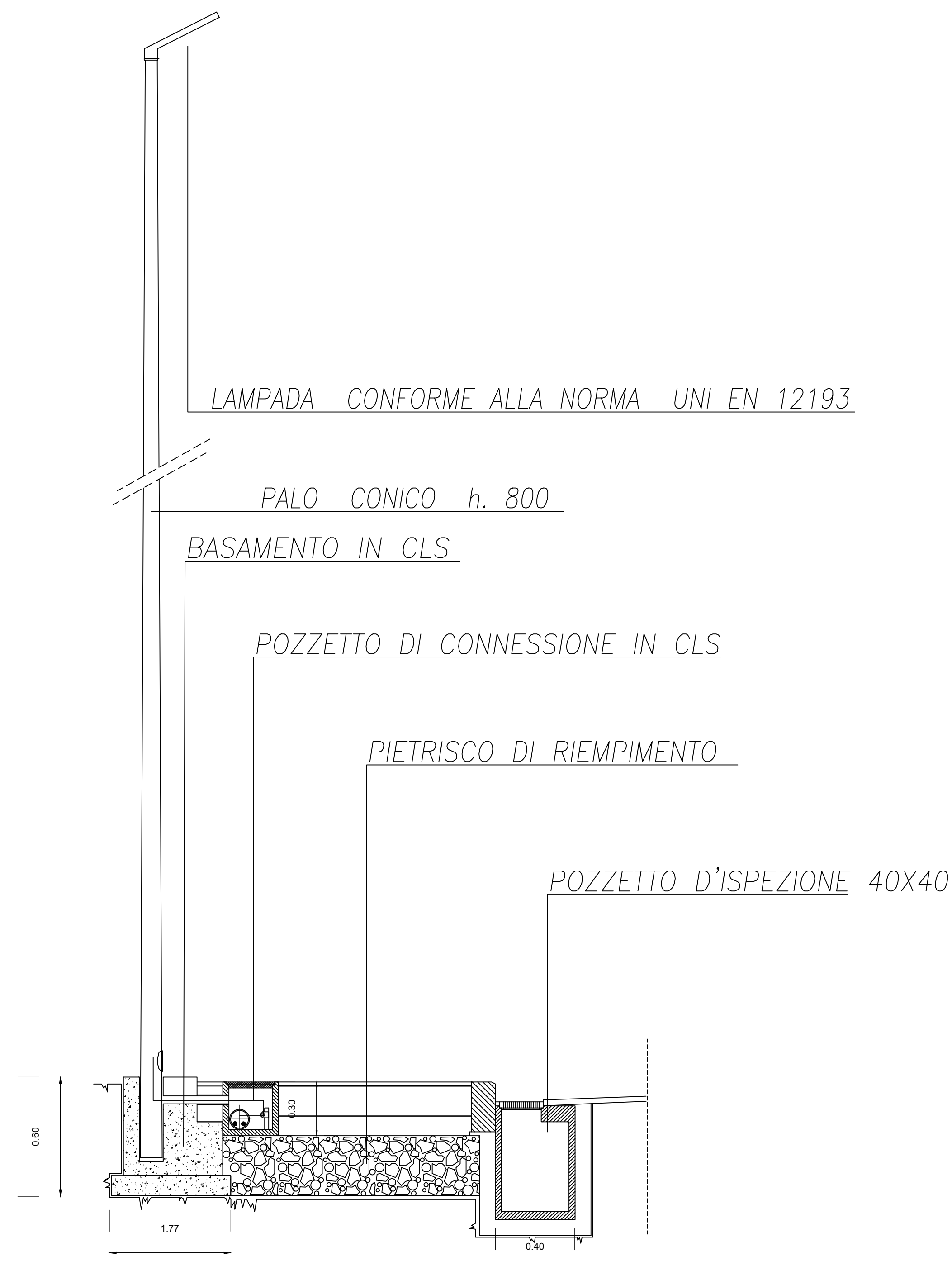


DETTAGLIO 02 :
IPOTESI LAMPIONE PER ILLUMINAZIONE CAMPI
E POZZETTI ISPEZIONABILI (1:50)



SEZIONE
TRASVERSALE
B-B'



COMUNE DI
CASTEL MAGGIORE

SETTORI LAVORI
PUBBLICI E PATRIMONIOresponsabile del procedimento
Lucia Campana

progettista
arch. Francesco Rasori

Cantarelli Alessandro

REVISIONE INIZIALE: NOVEMBRE 2019

AGGIORNAMENTO REVISIONE:

**PROGETTAZIONE
CAMPO DA BASKET E
GREEN VOLLEY**
PRESSO IL CENTRO SPORTIVO
VIA LIRONE 46- CASTEL MAGGIORE (BO)

PROGETTO
ESECUTIVO

DETTAGLI
COSTRUTTIVI
CAMPO

TAVOLA 07